

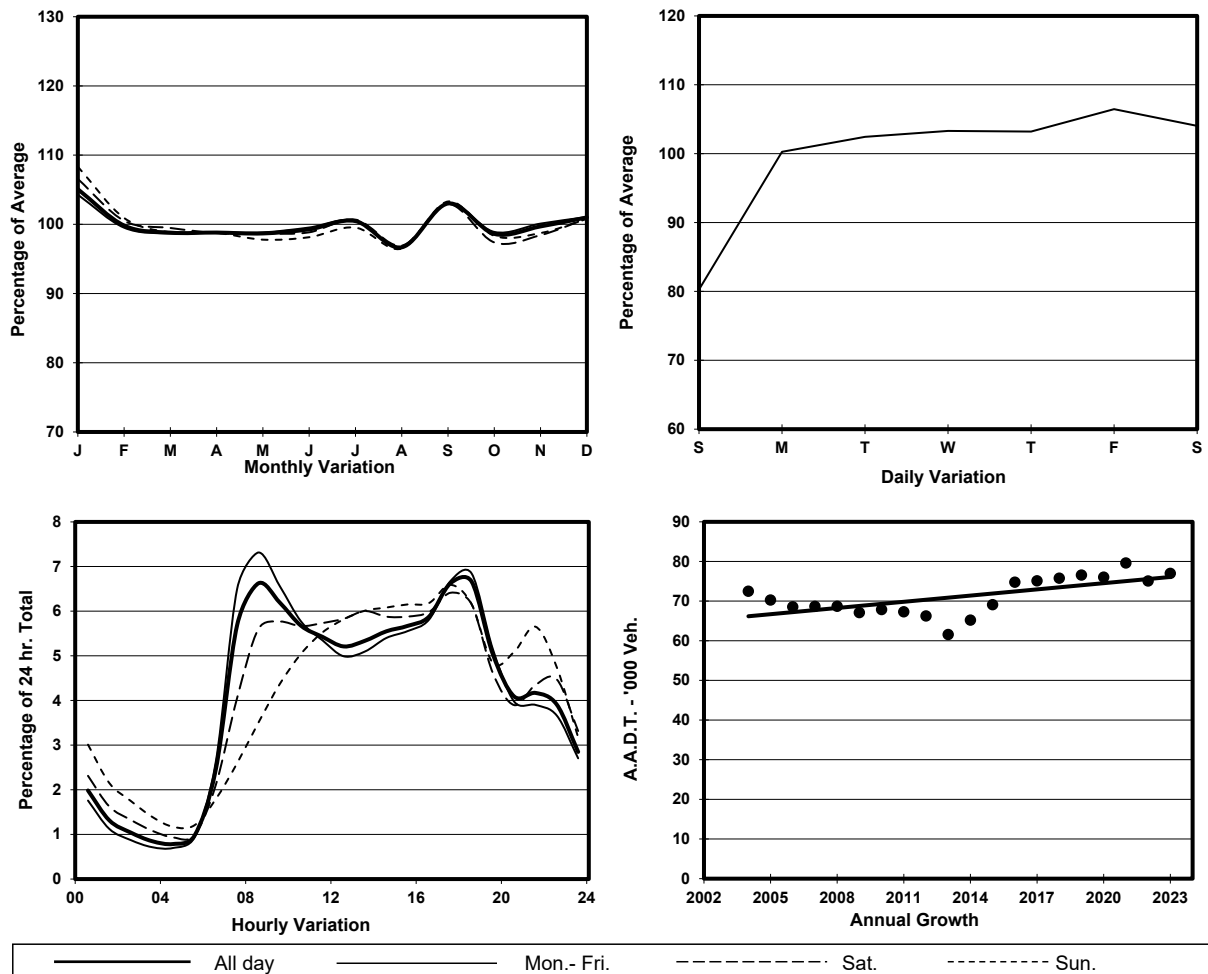
YEAR 2023

LINK TUEN MUN RD (from CASTLE PEAK RD - TSUEN WAN
to TSING LONG HIGHWAY - TING KAU BRIDGE)

CORE STATION 5035
ROAD NETWORK MAJOR
ROAD TYPE EXPRESSWAY



1. TRAFFIC FLOW VARIATION AND GROWTH



2. TRAFFIC CHARACTERISTICS (BY DIRECTION)

Parameter	All - Day	Mon. - Fri.	Sat.	Sun.
EAST BOUND				
A.A.D.T.	38060	39790	39840	30580
R 12 / 24 - %	75	76.5	72.8	68.6
R 16 / 24 - %	88	88.7	86.9	85.4
AM Peak Hour	0800-0900	0800-0900	0800-0900	0900-1000
One-way flow at AM peak hour	3190	3700	2770	1640
T - % (AM)	-	-	-	-
PM Peak Hour	1700-1800	1700-1800	1700-1800	1700-1800
One-way flow at PM peak hour	2350	2460	2390	1940
T - % (PM)	-	-	-	-
Prop.of commercial vehicles - 16 hr.	-	-	-	-
WEST BOUND				
A.A.D.T.	38920	40450	41130	32150
R 12 / 24 - %	66.2	67.4	65.3	59.7
R 16 / 24 - %	87.5	88.5	85.7	83.4
AM Peak Hour	0900-1000	0800-0900	0900-1000	0900-1000
One-way flow at AM peak hour	1920	2170	1950	1100
T - % (AM)	-	-	-	-
PM Peak Hour	1800-1900	1800-1900	1700-1800	1700-1800
One-way flow at PM peak hour	2910	3170	2800	2190
T - % (PM)	-	-	-	-
Prop.of commercial vehicles - 16 hr.	-	-	-	-

3. OTHER INFORMATION AND COMMENT